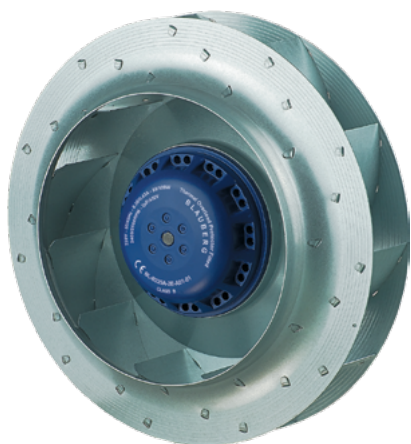


Ø 225 MM, BACKWARD CURVED

AC CENTRIFUGAL FAN



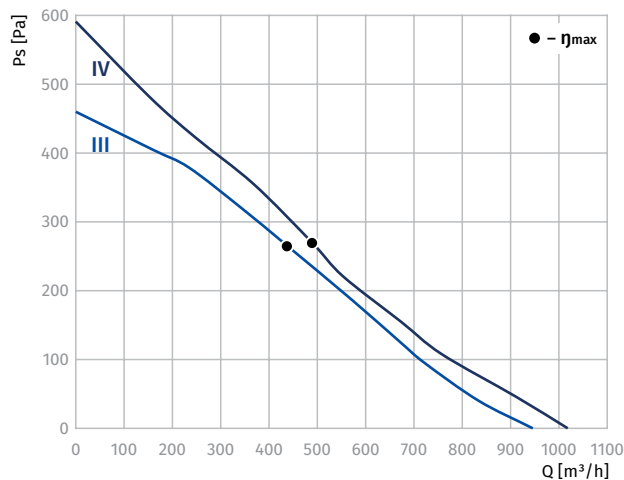
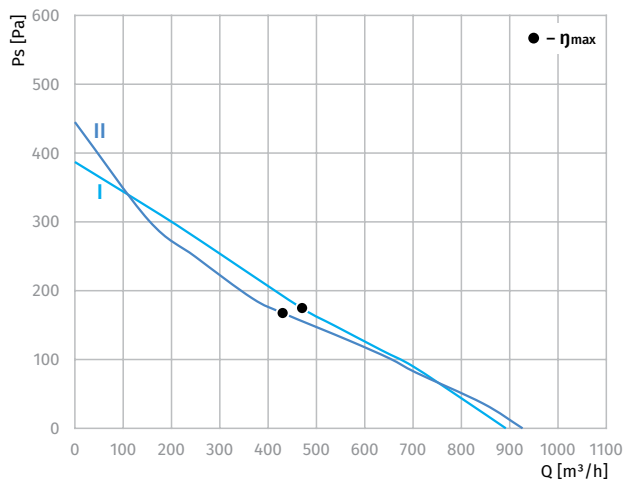
Features

- Impeller material: galvanized steel
- Direction of rotation: clockwise, seen on rotor
- Type of protection: IP44
- Insulation class: B
- Mode of operation: continuous operation (S1)
- Bearing: ball bearings
- Motor protection: self-resetting TOP wired internally

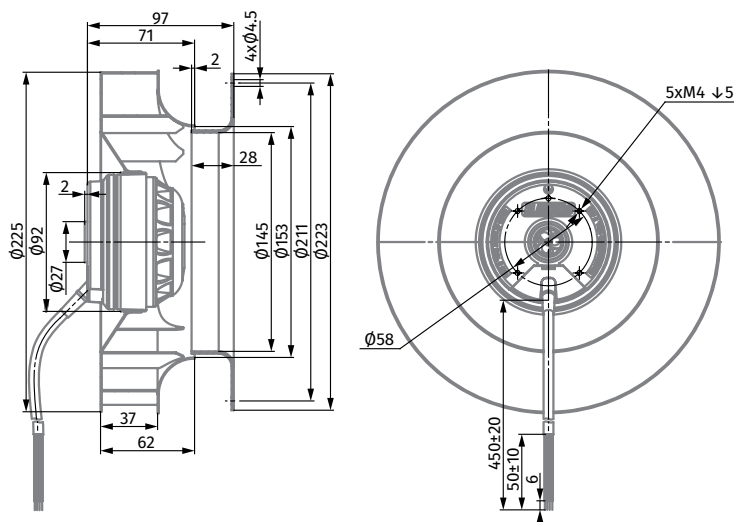


Technical data

Model	Perform. curve	Nominal voltage [VAC]	Frequency [Hz]	Speed [RPM]	Power input max [W]	Current max [A]	Sound pres. level [dB(A)]	Perm. amb. temp. [°C]	Capacitor [µF/VDB]	Electrical connection
BL-B225A-2E-A01-01	I	230	50	2150	92	0.41	70	-25 ... +50	2.0/450	A
	II	230	60	2100	109	0.48	71	-25 ... +50	2.0/450	A
BL-B225A-2E-C01-01	III	230	50	2550	108	0.49	74	-25 ... +50	3.5/450	A
	IV	230	60	2620	150	0.66	76	-25 ... +50	3.5/450	A



Overall Dimensions



Ø 225 MM, BACKWARD CURVED

AC CENTRIFUGAL FAN



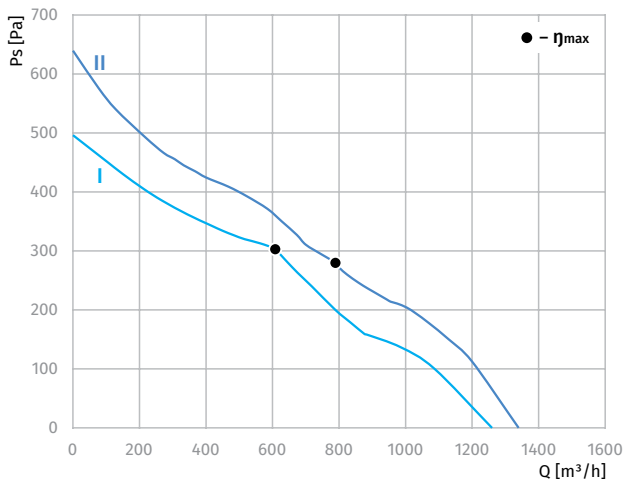
Features

- **Impeller material:** PA plastic + 30% glass fiber
- **Direction of rotation:** clockwise, seen on rotor
- **Type of protection:** IP44
- **Insulation class:** B
- **Mode of operation:** continuous operation (S1)
- **Bearing:** ball bearings
- **Motor protection:** self-resetting TOP wired internally

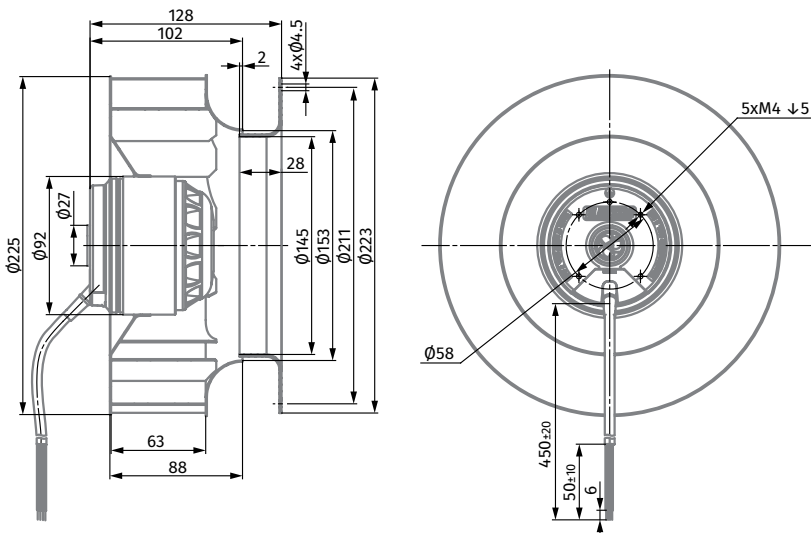


Technical data

Model	Perform. curve	Nominal voltage [VAC]	Frequency [Hz]	Speed [RPM]	Power input max [W]	Current max [A]	Sound pres. level [dB(A)]	Perm. amb. temp. [°C]	Capacitor [µF/VDB]	Electrical connection
BL-B225B-2E-C01-01	I	230	50	2480	129	0.57	69	-25 ... +50	4.0/450	A
	II	230	60	2600	182	0.80	71	-25 ... +50	4.0/450	A



Overall Dimensions



AC AXIAL FANS

BACKWARD CURVED AC CENTRIFUGAL FANS

BACKWARD CURVED EC CENTRIFUGAL FANS

FORWARD CURVED AC CENTRIFUGAL FANS

FORWARD CURVED EC CENTRIFUGAL FANS

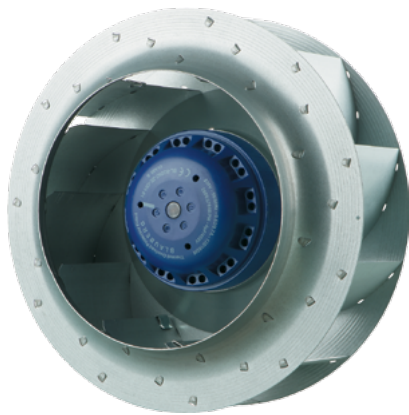
AC BLOWERS

EC BLOWERS

AC MOTORS

Ø 225 mm, BACKWARD CURVED

AC CENTRIFUGAL FAN



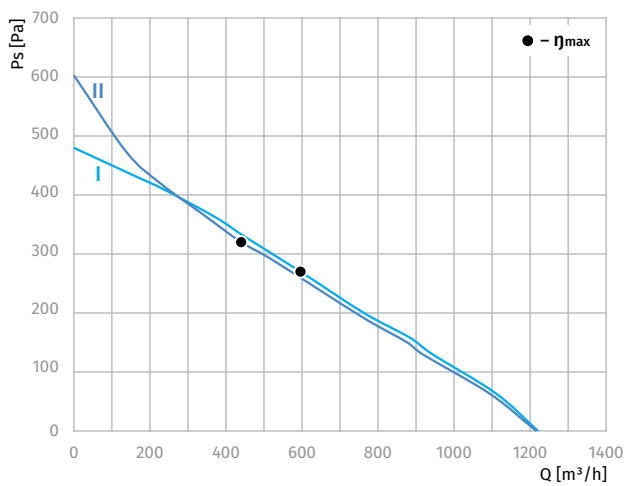
Features

- Impeller material: galvanized steel
- Direction of rotation: clockwise, seen on rotor
- Type of protection: IP44
- Insulation class: B
- Mode of operation: continuous operation (S1)
- Bearing: ball bearings
- Motor protection: self-resetting TOP wired internally



Technical data

Model	Perform. curve	Nominal voltage [VAC]	Frequency [Hz]	Speed [RPM]	Power input max [W]	Current max [A]	Sound pres. level [dB(A)]	Perm. amb. temp. [°C]	Capacitor [µF/VDB]	Electrical connection
BL-B225C-2E-C01-01	I	230	50	2350	153	0.66	70	-25 ... +50	4.0/450	A
	II	230	60	2240	195	0.85	71	-25 ... +50	4.0/450	A



Overall Dimensions

