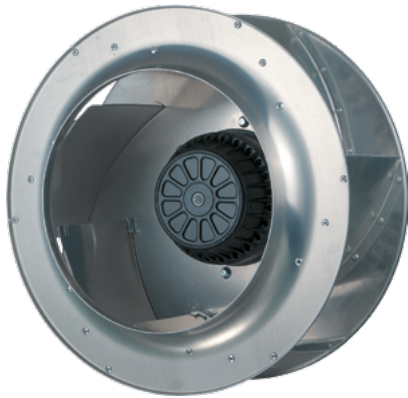


Ø 500 MM, BACKWARD CURVED

AC CENTRIFUGAL FAN



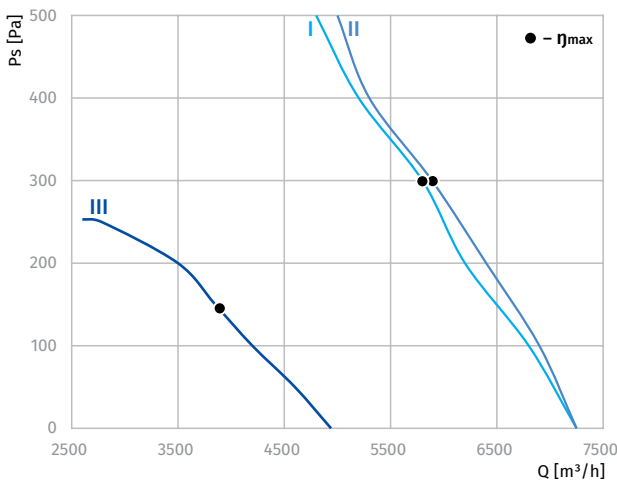
Features

- **Impeller material:** sheet aluminium
- **Direction of rotation:** clockwise, seen on rotor
- **Type of protection:** IP54
- **Insulation class:** F
- **Mode of operation:** continuous operation (S1)
- **Bearing:** ball bearings
- **Motor protection:** self-resetting TOP wired internally



Technical data

Model	Perform. curve	Nominal voltage [VAC]	Frequency [Hz]	Speed [RPM]	Power input max [W]	Current max [A]	Sound pres. level [dB(A)]	Perm. amb. temp. [°C]	Capacitor [µF/VDB]	Electrical connection
BL-B500A-4E-Q01-01	I	230	50	1380	1550	6.80	77	-25 ... +40	31.0/450	A
BL-B500A-4D-R01-01	II	230	50	1330	1560	2.90	77	-25 ... +50	-	B1
		400	50	1030	1100	1.60	77	-25 ... +50	-	B2
BL-B500A-6D-N01-01	III	230	50	900	650	3.00	65	-25 ... +60	-	B1
		400	50	900	650	1.45	65	-25 ... +60	-	B2



Overall Dimensions

